



TU05T

# B&C #E150 LSL

Single jersey



## Composition

B&C, now sourcing 100% more sustainable fibres

100% pre-shrunk ring-spun cotton (investing in Better Cotton\*)

*\*By buying this product from B&C you're supporting responsible cotton production through Better Cotton.*

## Size

S, M, L, XL, 2XL, 3XL, 4XL\*

## Packing

10 pcs/pack & 50 pcs/carton

## Weight

145 g/m<sup>2</sup>

## Color Note

Sport Grey: 85% pre-shrunk ring-spun cotton - 15% Viscose

\*Colours available in 4XL

## Details

B&C, now sourcing 100% more sustainable fibres

Your #150bestchoice #longsleeves #tshirt #unisex

The B&C #E150 LSL T-shirt is modern, tubular, long sleeves. It features a contemporary look and the legendary qualitative 150GSM single jersey offered by B&C for more than 20 years now. This T-shirt is one of the 10 styles in the B&C #E line. This line offers softness, comfort and #premium printing surface. Choosing this line you will get: great #contemporaryfit in an #amazing palette of #55 colours, all in duo.

For the perfect DUO, pair it with the B&C #E150 LSL /women

## #Style / Fit

- Mainstream contemporary fit#allpurposes
- Tubular construction #movement
- Thin collar rib for modern appearance #uptodate
- Back necktape for a clean finish #comfort
- Same 12 colours for men & women #perfectduo
- 7 sizes - S to 4XL #fitsall
- Satin label #ultrasofttouch

## #Quality / Handfeel

- Made of 100% cotton #protectmyskin #Oeko-Tex100
- Resistant fabric and soft handfeel #ringspun
- Unchanged proven B&C quality fabric #20years
- Middle weight fabric 150 gsm #whatevertheweather



DUO  
CONCEPT

Want the same style for everyone?

Try the B&C #E150 LSL /women

## Sustainability



## Care instructions

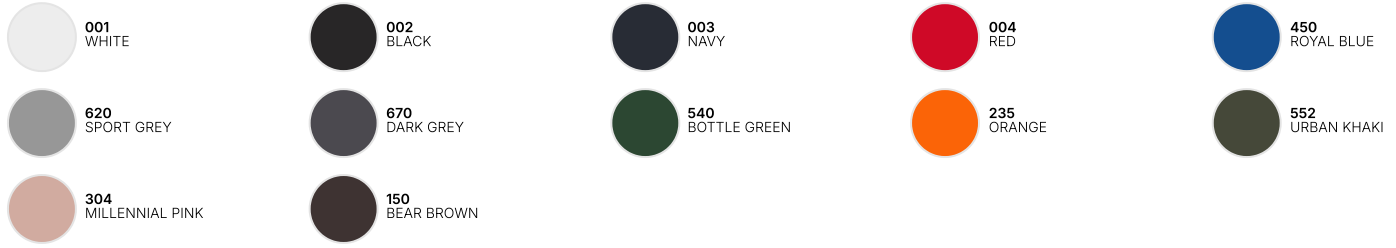


All our products are tested and approved using all main print techniques.

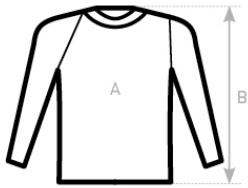
View on the website



## Colors



## Size Guide



B&C #E150 LSL TU 05T	XS	S	M	L	XL	2XL	3XL	4XL	5XL
A HALF CHEST	-	50	53	56	59	62	65	70	-
B BODY LENGTH FROM NECK POINT	-	70	72	74	76	78	80	82	-

View on the website

