

# HOBART WOMAN

# MUKUA

PL200WW (White) PL200WC (Colours)



100 White



502 Royal Blue



201 Dark Grey



501 Sky Blue



200 Black



613 Sage



509 Blue Fog



602 Bottle Green



510 Denim Blue



400 Red



500 Navy



411 Grape

## Women's long-sleeve polo

210g/m<sup>2</sup>

Piqué fabric

100% Ringspun pre-shrunk cotton

**S — 3XL**

Placket with 3 buttons

Shoulder-to-shoulder reinforced neck tape to avoid deformation

1x1 rib knit collar and sleeve cuffs

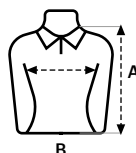
Cuff with elastane for greater elasticity and to avoid deformation

Sideseamed with side vents

## SIZES

	S	M	L	XL	2XL	3XL
A	63	65	67	69	71	73
B	42	45	48	51	54	57

Measurements in cm. Tolerance +/- 5%



Removable label

50 pieces per box

5 pieces per bag