

WOMEN TANK TOPS

STTW038 - STELLA DANCER



The women's cropped tank top

Relaxed Fit

- Sleeveless
- 1x1 rib at neck collar and armhole
- Inside back neck tape in self fabric
- Bottom hem with narrow double topstitch

Shell : Single Jersey, 100% Cotton - Organic Ring Spun Combed, Fabric washed, 120 GSM

WHITES



WHITE

COLORS



BLACK

FRAISE PECHÉ

BRIGHT BLUE

FRENCH NAVY

Printing Specifications

For suitable print techniques, please download our printing guide

Certifications & memberships

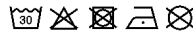


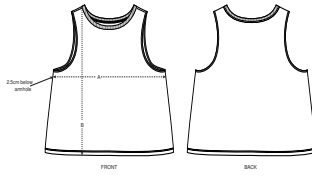
Organic
Certified by Control Union
CU 919434



Wash Instructions

Wash similar colours together, do not iron on print, wash and iron inside out.





SIZES		XS	S	M	L	XL
A	Half Chest	45.5	48	51	54	56
B	Body Length	52	54	56	58	59

PACKING

SIZES	XS	S	M	L	XL
PCS/BAG	5	5	5	5	5
PCS/BOX	100	100	100	100	100