



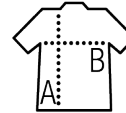
LONG SLEEVE POPLIN MEN'S SHIRT

Quality

POLYCOTTON POPLIN - 65% polyester -
35% cotton
Weight: 105 gsm colour, 95 gsm white

Style

Straight cut
Long sleeves
Stiffened collar
Adjustable cuffs with 2 buttons and bound slits
7 tone-on-tone button placket
Left chest pocket
2 comfort pleats at back



Sizes	S	M	L	XL	XXL	3XL	4XL
A/B	77/56	78/60	79/64	80/68	81/72	82/76	83/80



Sizes	S	M	L	XL	XXL	3XL	4XL
cm	37-38	39-40	41-42	43-44	45-46	47-48	49-50

PACKAGING



1



20

Carton size : 57 x 37 x 28 cm
Weight per carton : 6,72 kg

CHARACTERISTICS



White



Atoll blue



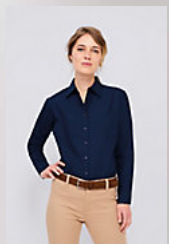
Mid blue



Apple green



Black



SOL'S EXECUTIVE
16060

