

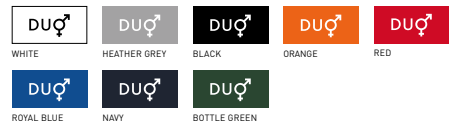
# B&C ID.001 LSL /WOMEN - PW 113

Basic by B&C - The 100% cotton piqué long-sleeved polo shirt is designed and engineered to offer the right style at the right price for large quantities.




## REGULAR FIT


- 1x1 rib knitted collar
- Necktape for better shape retention
- 2-button placket reinforced with fusible interlining
- Side seams for perfect fit
- Wide range of sizes to fit everyone: XS-3XL
- Cotton piqué made to be decorated
- Matching coloured buttons for better flexibility when printing/decorating
- The fabric has been tested and approved for all standard printing techniques




 100% pre-shrunk ring-spun cotton  
HEATHER GREY: 90% PRE-SHRUNK RING-SPUN COTTON - 10% VISCOSE

 Piqué

 180 g/m<sup>2</sup>

 XS - S - M - L - XL - 2XL - 3XL

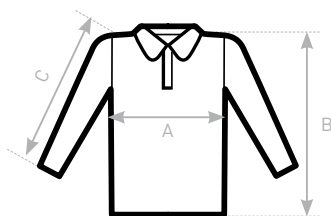
 10 pcs/pack & 50 pcs/carton



**DU♂  
CONCEPT**  
with B&C ID.001 LSL

**You like the B&C ID.001 LSL /w. but want it in short sleeves? Try the:**

\* B&C ID.001 /women - same fabric but in short-sleeves



## SIZES [CM]

B&C ID.001 LSL /WOMEN PW 113	XS	S	M	L	XL	2XL	3XL
A HALF CHEST	41	44	47	50	53	56	59
B BODY LENGTH FROM NECK POINT	62	63,5	65	66,5	68	69,5	71
C SLEEVE LENGTH	58	59	60	61	62	63	64



OEKO-TEX®  
CONFIDENCE IN TEXTILES  
STANDARD 100  
1501003 Centexbel  
Tested for harmful substances.  
www.oeko-tex.com/standard100