

PR121 'Barley' Contrast Stitch Bib Apron

Description

A bib apron, made with a combination of recycled polyester and cotton. Featuring two handy side pockets with rivet detail. The centre zip pocket comes away to the underside to allow embroidery applications. Contrast stitching features across this apron and oversized antique brass eyelets and adjustable buckle give an industrial - chic feel to the design.

Product Features:

- Eyelet and rivet detail.
- Contrast stitching.
- Side pockets and centre zipped pocket.
- Adjustable antique brass buckle on neckband.

Highlights:

- Represents our commitment to buying Cotton through the Better Cotton Initiative.
- Recycled polyester from post-consumer plastic.

Available In:

One Size

Certifications:



Colours:

Colour	Pantone	C	M	Y	K	
Black/Charcoal	Black	Black c	0	0	0	100
	Charcoal	7540c	41	28	22	70
Khaki/Brown	Khaki	7536c	11	13	30	32
	Brown	4975c	36	84	59	85
Navy/Camel	Navy	533c	95	72	15	67
	Camel	2318c	29	52	72	15
Olive/Chestnut	Olive	7763c	46	26	84	66
	Chestnut	7581c	0	64	70	60

Fabric:

65% Recycled Polyester, 35% Cotton, 195gsm.

Suggested Decoration:

Screen Print, Transfer Print, Embroidery

Country of Origin:

Bangladesh

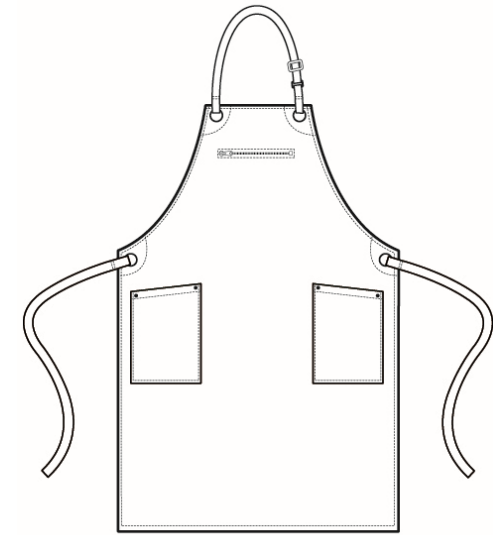
Commodity Code:

6211431000

Features:



Wash Care:



Carton Information:

Sizes	Carton	Pack	SKU's	Carton Weight	Carton Dimensions
All Sizes	72	6	4	15kg approx	60cm x 40cm x 24cm

Garment Sizes:

86cm long x 72cm wide with 90cm long ties.
Two slanted side pockets measuring 24cm depth by 17cm wide.

This garment can withstand a high wash temperature, but unless heavily soiled, we recommend washing at 30C to help the environment.