

# 534 Pacific 3 IN 1

Jacket Ladies

Upper jacket:

plain weave, 100 % polyester, inner TPU white lamination, 130 g/m<sup>2</sup>

Inner fleece:

100 % polyester, antipilling finish on both sides, 220 g/m<sup>2</sup>  
waterproof 8 000 mm, breathable 5 000 g/m<sup>2</sup>/24 h.

- multipurpose use 3 in 1
- **Upper jacket:**
  - slight fit cut
  - waterproof zipper with chin protection
  - removable hood with reinforced peak
  - hood and bottom hem adjustable by elastic drawstring
  - adjustable sleeve hems with velcro
  - welt pockets with reverse coil zipper
  - breast pocket
  - taped seams
  - access for branding in side lining
  - contrast elements
- **Inner fleece:**
  - removable inner fleece jacket
  - full-length molded zipper
  - welt pockets
  - bottom hem adjustable by elastic drawstring
  - contrast elements
  - antipilling finish on both sides



## Grammage

130/220 g/m<sup>2</sup>

## Size

XS - 2XL

## Label

woven

## Pieces in bag

1 pcs

## Minimum pieces

1 pcs

## Type of application

digital printing, embroidery, transfer printing

36

01

44

07



# 534 Pacific 3 IN 1 ♀

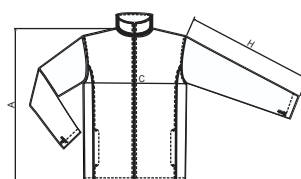
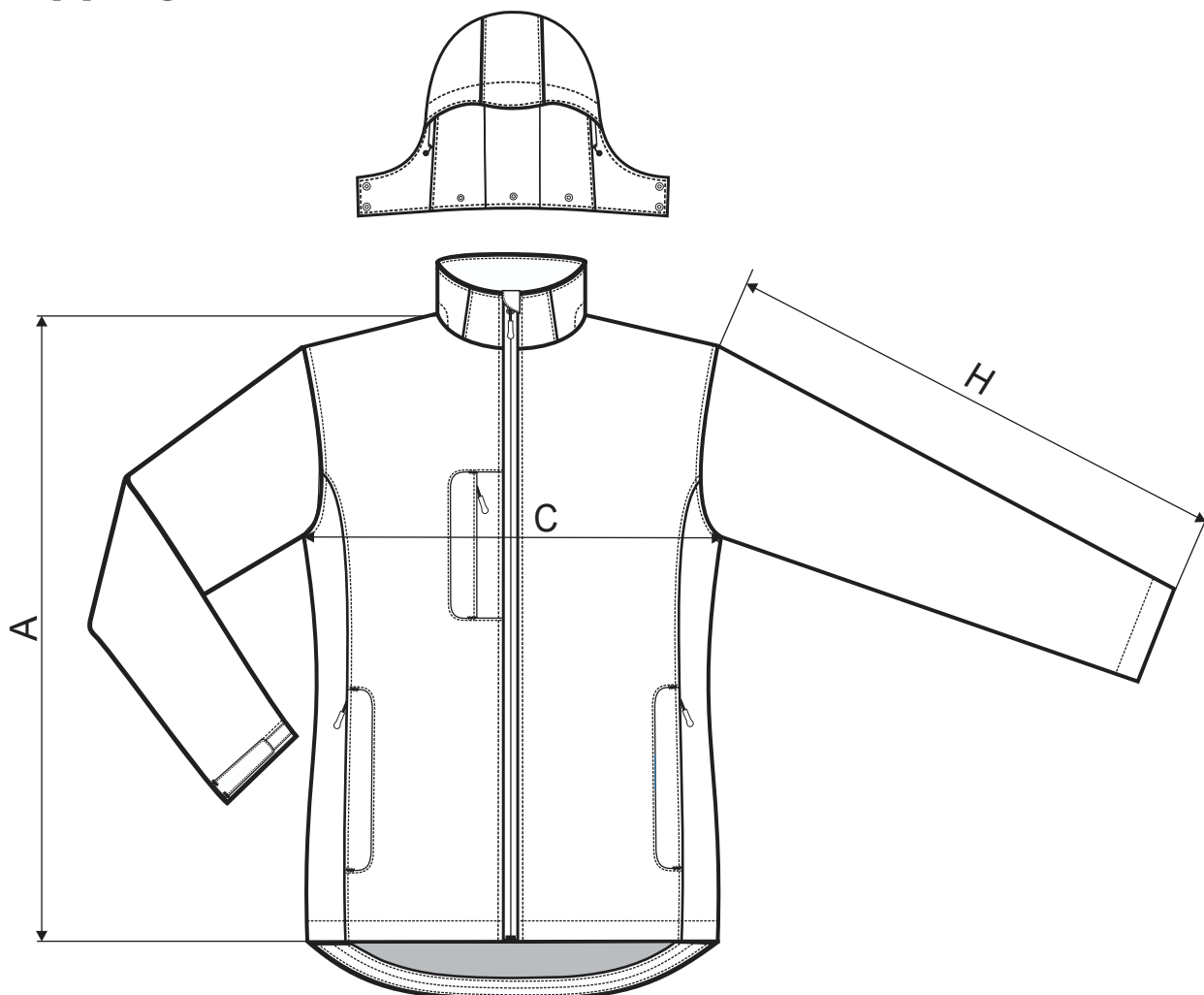
## SIZE SPECIFICATION [cm]

## PAGE 1 OF 2 - UPPER JACKET

size	XS	S	M	L	XL	2XL
<b>A</b>	62,5	65	67,5	70	72,5	73
<b>C</b>	45	49	53	57	63	69
<b>H</b>	60	62	64	66	68	68

All size specifications listed are in cm. Accepted tolerance of up to  $\pm 5\%$ .

## Upper jacket



Scroll to next page  
to see size specification  
of **Innerfleece**

# 534 Pacific 3 IN 1 ♀

## SIZE SPECIFICATION [cm]

## PAGE 2 OF 2 - INNERFLEECE

size	XS	S	M	L	XL	2XL
<b>A</b>	60,5	63	65,5	68	70,5	71
<b>C</b>	42	46	50	54	60	66
<b>H</b>	58	60	62	64	66	66

All size specifications listed are in cm. Accepted tolerance of up to  $\pm 5\%$ .

## Innerfleece

