

B&C HOODED SOFTSHELL /W. - JW 937

SOFTSHELL JACKET



Detachable balaclava hood with adjustable drawstring and trendy stoppers



Full zip opening with chin protector



Full inner placket in shell fabric

Raglan Sleeves

Easy access for decoration via inner left breast zip



Flat stitching for greater comfort

Perfect arm & elbow sleeve shape



Feminine cut



Adjustable bottom hem (with drawcord) Longer back



2 front side pockets with zips



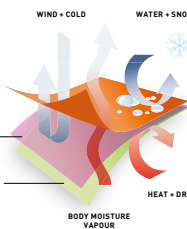
Cuffs with closing tabs & embossed plastic pull



OUTER LAYER
ALL WEATHER CONDITIONS
BLOCKING SHELL FABRIC

MID LAYER
FULL BONDED
BREATHABLE MEMBRANE

INNER LAYER
BREATHABLE AND ABSORBING
MICRO-FLEECE, FOR MAXIMUM
BODY HEAT RETENTION
AND DRYNESS



High performance Softshell jacket

3-LAYER SOFTSHELL JACKET 340G/M²

Outer layer: 94% polyester - 6% elastane
Woven Softshell

Mid layer: bonded breathable membrane,
windproof, waterproof

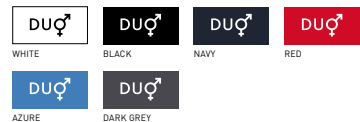
Inner layer: 100% polyester anti-pilling
micro-fleece and 100% polyester
mesh lining on front panels

Waterproof: 5000 mm

Breathable: 1000 MVP

XS - S - M - L - XL - 2XL

1 pc/pack & 10 pcs/carton

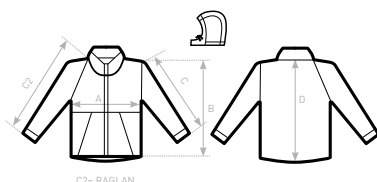


- Windproof
- Waterproof
- Thermo-insulated
- Breathable
- Water-repellent
- Real micro-fleece
- ANTI FILLING Anti-pilling
- 4-way stretch
- Feminine cut



DUO♂
CONCEPT

with B&C Hooded Softshell /men



SIZES [CM]

B&C HOODED SOFTSHELL /W. JW 937

	XS	S	M	L	XL	2XL	3XL
A HALF CHEST	44	46	48	50	52	54	-
B BODY LENGTH FROM NECK POINT	59	61	63	65	67	69	-
C2 SLEEVE LENGTH FROM NECK POINT FOLLOWING THE CURVE	67,5	69,5	71,5	73,5	75,5	77,5	-
D CENTER BACK LENGTH	62	64	66	68	70	72	-