




B&C OCEAN SHORE - JU 824

MIDDLE WEIGHT JACKET



Contemporary middle weight jacket with thermo micro-fleece lining

-  **OUT:** 100% nylon taffeta
- IN:** Body lining: 100% polyester micro-fleece
Sleeve lining: 100% padded polyester
-  **S - M - L - XL - 2XL - 3XL***
-  **5 pcs/pack & 30 pcs/carton**

* ONLY AVAILABLE IN BLACK, NAVY AND RED



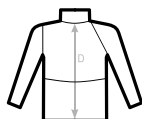
* COLOURS AVAILABLE IN 3XL

-  Windproof
-  Water-repellent
-  Showerproof
-  Real micro-fleece
-  Thermo-insulated

- Adjustable storm hood concealed in collar
- Micro-fleece lining for extra warmth
- Standing collar for great protection
- Front covered full zip opening with closing tabs and zip pull
- Adjustable cuffs with closing tabs
- Open hem with elasticated cord, 2 stoppers and easy-to-pull rings
- 2 front pockets and 1 inner wallet pocket



C2= RAGLAN



SIZES [CM]

B&C OCEAN SHORE JU 824	XS	S	M	L	XL	2XL	3XL
A HALF CHEST	-	60	62,5	65	67,5	70	72,5
B BODY LENGTH FROM NECK POINT	-	74	76	78	80	82	84
C SLEEVE LENGTH	-	61,5	63	64,5	66	67,5	69
D CENTER BACK LENGTH	-	72	74	76	78	80	82

B&C
COLLECTION
**OUTER
WEAR
/UNIT**