



JM930

B&C Bodywarmer /men

Trendy Down Bodywarmer

B&C
COLLECTION

Composition

Outer layer: 100% nylon taffeta
Inner layer: 100% padded polyester lining (200 g/m²)

Size

S, M, L, XL, 2XL, 3XL*

Packing

5 pcs/pack & 10 pcs/carton

Color Note

*Colours available in 3XL: Black, Navy, Red

Details

B&C Bodywarmer /men sleeveless jacket is one of the B&C Outerwear Unit's most versatile pieces.

Designed to bring warmth to late autumn and early winter days, its minimal cut and colours offer will help to perfectly translate it into an excellent accessory to be layered with coats and jackets as the cold gets more intense. While completely down-free, it provides impeccable warmth in cold weather thanks to its Thermo-Fibre insulation, standing collar and longer back.

Go discover the outside whether for work or leisure, this bodywarmer is windproof, showerproof and water repellent.

Equipped with hidden zip at the back, the decoration is made easy without compromising look, finishing and quality.

For the perfect DUO, pair it with the B&C Zen+ /women.

- Trendy down bodywarmer
- Full zip opening with zip pull
- 2 front pockets with zip and zip pulls
- 1 inner wallet pocket
- Open hem and longer back
- Easy decoration thanks to a large back area without stitching and invisible zip opening

Care instructions



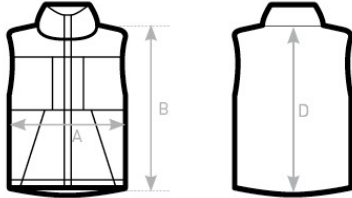
All our products are tested and approved using all main print techniques.



DUO
CONCEPT

Want the same style for everyone?

Try the B&C Zen+ /women

Colors**Size Guide**

B&C BODYWARMER /MEN JM 930	XS	S	M	L	XL	XXL	XXXL
A HALF CHEST	-	58	60	62	65	67	69
B BODY LENGTH FROM NECK POINT	-	67	69	71	73	77	79
D CENTER BACK LENGTH	-	71	73	75	77	81	83