

# Kid's Hooded Fleece Jacket



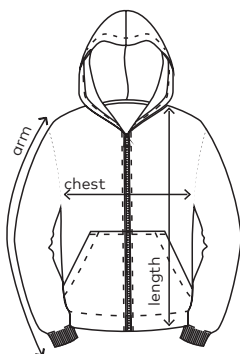
**colours:**

-  black light grey
-  flame light grey
-  red black
-  navy light grey
-  kelly green black



**798 | 104-164 | 320 g/m<sup>2</sup> | 100 % polyester**

Double fleece unisex hooded jacket, full-length zipper, sleeve cuffs with elastane as well as slit pockets with decorative stitching. The inside of the jacket is in contrast colour, produced of polyester with anti-pilling finishing both sides. The hooded jacket has a casual cut.



	<b>104</b>	<b>116</b>	<b>128</b>	<b>140</b>	<b>152</b>	<b>164</b>
<b>chest</b>	40	42	44	46	48	51
<b>length</b>	44	48	52	56	60	65
<b>arm</b>	43	49	52	55	58	62

Sizes and weights + /- 5%. Subject to amendment.