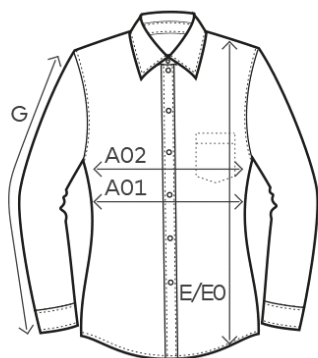


6915

## Women's Oxford Shirt LS



## measurement table (cm)

	XS	S	M	L	XL	XXL	XXXL
A01	44	47	50	54	58	62	68
E	64	66	68	70	72	74	76
G	60	61	62	63	64	65	66

A01 1/2 CHEST

E BODY LENGTH

G SLEEVE LENGTH

## colours



00/white

11-0601 TPX/TCX



CA/charcoal

18-0306 TPX/TCX



RO/rosa

12-2905 TCX



SY/sky

17-4027 TPX/TCX



## product

6915

Women's Oxford Shirt LS

## material

60 % cotton, 40 % polyester

## weight

125 g/m<sup>2</sup>

## sizes

XS-XXXL

## care instructions



## packaging units

Unit = 1 piece.

Carton = 20 pieces.

Sizes and weights + /- 5%. Subject to amendment.



6915

## Women's Oxford Shirt LS

**product description**

Longsleeve shirt, kent-collar, button panel with tone-in-tone buttons, double back yoke, curved hem, neutral size label, adjustable 2-button cuff (barrel cuff), sleeve placket with button, separate chest pocket, darts front and back, easy-care mixed fabric, oxford easy care finishing, wash 60° C, spare buttons, 60 % cotton, 40 % polyester, 125 g/m<sup>2</sup>, XS-XXXL.  
Classical single packing.

**short description**

Classic oxford longsleeve mixed fabric shirt with reinforced kent collar and button panel with tone-in-tone buttons as well as a separate chest pocket and spare button. The specific features of this shirt: easy care mixed fabric, darts front and back, double back yoke, curved hem, produced of combed cotton with polyester. The shirt has a modern cut. Classical single packing.

**properties**

- outstanding washing results at 60° C as well as suitable for tumble drying
- wide range of sizes from XS – XXXL
- no promodoro label for easy rebranding
- particularly easy-care due to easy-care finishing

Sizes and weights + /- 5%. Subject to amendment.



 **promodoro**<sup>®</sup>