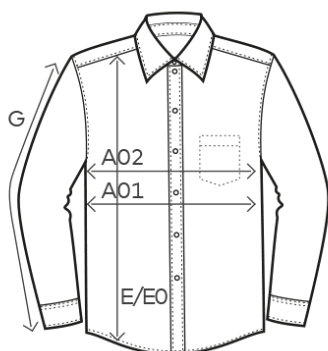


6910

Men's Oxford Shirt Longsleeve



measurement table (cm)

colours



00/white

11-0601 TPX /TCX



CA/charcoal

18-0306 TPX/TCX



RO/rosa

12-2905 TCX



SY/sky

17-4027 TPX/TCX



product

6910

Men's Oxford Shirt Longsleeve

material

60 % cotton, 40 % polyester

weight

125 g/m²

sizes

S-5XL

care instructions



packaging units

Unit = 1 piece.

Carton = 20 pieces.

Sizes and weights + /- 5%. Subject to amendment.



6910

Men's Oxford Shirt Longsleeve

product description

Longsleeve shirt, kent-collar, button panel with tone-in-tone buttons, double back yoke, curved hem, neutral size label, adjustable 2-button cuff (barrel cuff), sleeve placket with button, separate chest pocket, easy-care mixed fabric, oxford, easy care finishing, wash 60° C, spare buttons, 60 % cotton, 40% polyester, 125 g/m², S- 5XL.
Classical single packing.

short description

Classic oxford longsleeve mixed fabric shirt with reinforced kent collar and button panel with tone-in-tone buttons as well as a separate chest pocket and spare button. The specific features of this shirt: easy care mixed fabric, double back yoke, curved hem, produced of combed cotton with polyester. The shirt has a modern cut. Classical single packing.

properties

- outstanding washing results at 60° C as well as suitable for tumble drying
- wide range of sizes from S – 5XL
- no promodoro label for easy rebranding
- particularly easy-care due to easy-care finishing

Sizes and weights + /- 5%. Subject to amendment.



 **promodoro**[®]