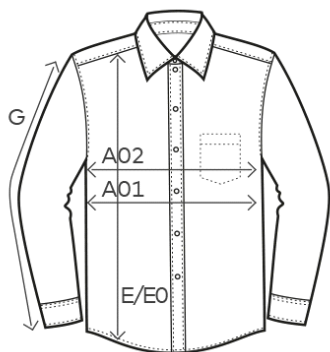


6310

Men's Poplin Shirt Longsleeve



measurement table (cm)

	S	M	L	XL	XXL	XXXL	4XL	5XL
_A	37,38	39,4	41,42	43,44	45,46	47,48	49,5	51,52
A01	53	56	60	64	68	72	78	84
E	77	79	81	83	86	89	92	95
G	63	64	65	66	67	68	69	70

_A COLLAR WIDE SIDE

A01 1/2 CHEST

E BODY LENGTH

G SLEEVE LENGTH

colours



00/white

11-0601 TPX /TCX



9D/black

19-4205 TPX/TCX



SG/steel gray

18-000 TCX



LU/light blue

15-3932 TPX/TCX



product

6310

Men's Poplin Shirt Longsleeve

material

55 % cotton, 45 % polyester

weight

120 g/m²

sizes

S-5XL

care instructions



packaging units

Unit = 1 piece.

Carton = 20 pieces.

Sizes and weights + /- 5%. Subject to amendment.



6310

Men's Poplin Shirt Longsleeve

product description

Longsleeve shirt, kent-collar, button panel with tone-in-tone buttons, double back yoke, curved hem, neutral size label, adjustable 2-button cuff (barrel cuff), sleeve placket with button, separate chest pocket, easy-care mixed fabric, poplin, easy care finishing, wash 60° C, spare buttons, 55% cotton, 45% polyester, 120g/m², S- 5XL.

Single packed in an exclusive cardboard. Cardboard can be used as hanger, no additional packing utensils.

short description

Classic poplin long sleeve mixed fabric shirt with reinforced kent collar and button panel with tone-in-tone buttons as well as a separate chest pocket and spare buttons. The specific features of this shirt: easy care mixed fabric, adjustable 2-button cuff (barrel cuff), long sleeve placket with button, double back yoke, curved hem, produced of combed cotton with polyester. The shirt has a modern cut.

Exclusive cardboard can be used as hanger, no additional packing utensils required.

properties

- outstanding washing results at 60° C as well as suitable for tumble drying
- wide range of sizes from S –5XL
- no promodoro label for easy rebranding

Sizes and weights + /- 5%. Subject to amendment.



 **promodoro**[®]