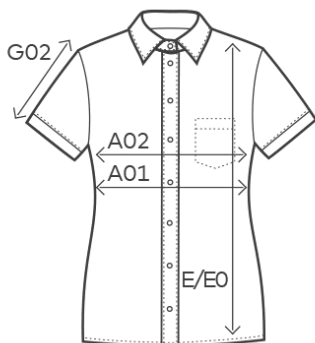


6305

## Women's Poplin Shirt



## measurement table (cm)

|     | XS | S  | M  | L  | XL | XXL | XXXL |
|-----|----|----|----|----|----|-----|------|
| A01 | 44 | 47 | 50 | 54 | 58 | 62  | 68   |
| E   | 64 | 66 | 68 | 70 | 72 | 74  | 76   |
| G02 | 16 | 17 | 18 | 19 | 20 | 21  | 23   |

A01 1/2 CHEST

E BODY LENGTH

G02 SLEEVE LENGTH

## colours



00/white

11-0601 TPX /TCX



9D/black

19-4205 TPX/TCX



SG/steel gray

18-000 TCX



LU/light blue

15-3932 TPX/TCX



## product

6305

Women's Poplin Shirt

## material

55 % cotton, 45 % polyester

## weight

120 g/m<sup>2</sup>

## sizes

XS-XXXL

## care instructions



## packaging units

Unit = 1 piece.

Carton = 20 pieces.

Sizes and weights + /- 5%. Subject to amendment.



6305

## Women's Poplin Shirt

**product description**

Short sleeve shirt, kent-collar, button panel with tone-in-tone buttons, double back yoke, curved hem, neutral size label, separate chest pocket, darts front and back, easy-care mixed fabric, poplin, easy care finishing, wash 60° C, spare button, 55% cotton, 45% polyester, 120g/m<sup>2</sup>, XS-XXXL. Single packed in an exclusive cardboard. Cardboard can be used as hanger, no additional packing utensils.

**short description**

Classic poplin short sleeve mixed fabric shirt with reinforced kent collar and button panel with tone-in-tone buttons as well as a separate chest pocket and spare buttons. The specific features of this shirt: easy care mixed fabric, darts front and back, double back yoke, curved hem, produced of combed cotton with polyester. The shirt has a modern cut. Exclusive cardboard can be used as hanger, no additional packing utensils required.

**properties**

- outstanding washing results at 60° C as well as suitable for tumble drying
- wide range of sizes from XS – XXXL
- no promodoro label for easy rebranding
- customizable with Do your own Placket
- particularly easy-care due to easy-care finishing

Sizes and weights + /- 5%. Subject to amendment.



 **promodoro**<sup>®</sup>