



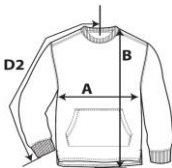
**1536 NEW!**

**Adult French Terry Crewneck**

**COMFORT  
COLORS®**  
★ EST. 1975 ★  
GARMENT DYE  
RING SPUN  
100% COTTON  
MADE IN HONDURAS  
**L - G - G**

**DETAILS**

<b>Weight</b>	237.0 G/SqM
<b>Content</b>	100% ring spun cotton
<b>Yarn Count</b>	31/1
<b>Features</b>	Soft-washed garment-dyed fabric 1x1 rib on collar and cuffs Twill taped back neck Rolled forward shoulder Twill label Joker label Pouch pocket Twin-needle bottom hem with side vents and drop tail Twin-needle neck, shoulder, armhole and cuffs
<b>Sizes</b>	S - 3XL
<b>Case Packs</b>	S - 3XL 24 PIECES
<b>Colours</b>	8
<b>SKU's</b>	48



**SPECIFICATIONS**

	ToI-	ToI+	S	M	L	XL	2XL	3XL
<b>Centimeters</b>								
<b>Chest (A)</b>	1.905	1.905	50.800	55.880	60.960	66.040	71.120	76.200
<b>Length from HPS (B)</b>	2.540	2.540	72.390	74.930	77.470	80.010	83.185	85.725
<b>Inches</b>								
<b>Chest (A)</b>	0.750	0.750	20.000	22.000	24.000	26.000	28.000	30.000
<b>Length from HPS (B)</b>	1.000	1.000	28.500	29.500	30.500	31.500	32.750	33.750

**S-3XL**

COLOURS	Code	Comments
Blue Jean	03P	
Chalky Mint	09P	
Crimson	12P	
Flo Blue	16P	
Lagoon Blue	12D	
Pepper	34P	
True Navy	18R	
Watermelon	41P	

**CHANGES**

**Additions**

S, M, L, XL, 2XL, 3XL      Blue Jean, Chalky Mint, Crimson, Flo Blue, Lagoon Blue, Pepper, True Navy, Watermelon

Total Net Change 48 SKU's

PIGMENT DYE REFERS TO WASHED DOWN COLOURS THAT CONTINUE TO SOFTEN AND AGE WITH WASHING. PIGMENTS ARE INSOLUBLE COLOUR PARTICLES ATTACHED TO THE SURFACE OF CLOTH USING A BINDING AGENT. SLIGHT SHADE VARIATIONS ARE INHERENT IN THE PIGMENT DYE PROCESS.

DUE TO THE NATURE OF THE GARMENT DYING PROCESS, PIGMENT DYED GOODS SHOULD ALWAYS BE WASHED SEPARATELY BEFORE WEARING TO AVOID BLEEDING ISSUES.